



SUPPORTS FOR STUDENTS: Mental Health, Academic & Social/Emotional

May 24, 2018

**Jaime Alicea
Superintendent of Schools**



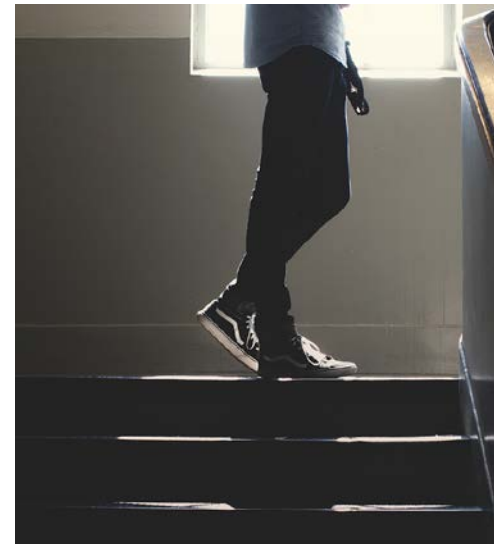
Onondaga County and SCSD Collaboration

Mental Health Counseling

Allows for ongoing care of school district children while minimizing missed instructional time.

Providers | ARISE, Liberty Resources, SCHC

- 28 schools (Adding SY2018-19 clinics at Corcoran, Henninger, ITC, ELMS, JVC, CORE)
- \$5.148 million financial impact
- Clinical Staff: 33



Mental Health & Substance Abuse Counseling

Offers “first line” mental health and substance abuse counseling to students and provides referrals for students needing ongoing care.

Providers | Contact Community Services

- 5 high schools
- \$930,000 financial impact
- Student Assistance Counselors: 10 / Direct Support=8
- Providers: Contact Community Services

Family Support for Student Success

Connects families and students to services inside and outside of school to improve skill development and address barriers to learning with highest intensity

Providers

Coordinated Care Services, Inc.

- All schools
- \$3,946,878 financial impact
- FSSS Staff: 58 / Direct Service = 51
- 2017: Served 648 families with a total of 1,917 children

Promise Zone Specialists

Matches students with emotional/behavioral needs with effective school-based interventions that allow students to stay in class and be ready to learn.

Providers

Coordinated Care Services, Inc.

- 33 schools
- \$2,502,000 financial impact
- PZ Staff: 37 / Direct Service 34



Child Welfare Response Team

1. **School Liaisons:** Prevention work to support children and families when concerns are present but the issues do not rise to the level of calling the hotline.
2. **Dedicated Child Welfare Response:** To investigate child abuse and neglect hotline calls.

Providers

Coordinated Care Services, Inc. & Onondaga County

- All schools
- \$1,000,000 financial impact
- Staff: 20

Primary Project

School-based prevention and early intervention program that addresses school adjustment difficulties through developmentally appropriate child-led play.

Providers | Contact Community Services

- All elementary students K-3
- \$157,482 financial impact
- Staff: 19



Community Partners

Youth Advocates

Case management supporting student attendance, behavior, academic support, and social/emotional skill development.

Provider	Hillside Work Scholarship Connection
-----------------	---

- 13 schools
- \$2,685,000 financial impact
- Staff: 44



Youth Development Specialists

Case management supporting student attendance, behavior, academic support, and social/emotional skill development.

Provider	Contact Community Services
-----------------	-----------------------------------

- 4 schools
- \$530,000 financial impact
- YDS Staff: 10



SCSD Support Staff

Social Workers

Support for students and families with mental health, behavior, academics and provide individual and group counseling/therapy.

- All schools
- Social Workers = 50
- Social Work Assistants = 13

Psychologists

Support for students and families with mental health, behavior, academics and provide individual and group counseling/therapy.

- All schools
- Psychologists = 44



School Counselors

Support for students with individual and group counseling, college and career exploration instruction, assistance with academic planning and monitoring, assistance in crisis situations, and referrals to school social workers, school psychologists or other professionals when specialized interventions are required for student success in school.

- All middle, K8, and high schools
- School Counselors = 40



Supports by School

Elementary

School	2017-18 Enroll.	Psych.	Social Worker	Social Work Assistant	Syracuse Promise Zone	Family Support for Student Success	Mental Health Clinician	Contact Primary Project	PAX GBG	Child Welfare Liaison	Total Staff
Bellevue	409	1.0	1.0	0.6	1.0	2.0	2.0	0.3	0.5	0.3	8.7
Delaware Acad./Prim.	467	1.0	1.0	2.0	1.0	2.0	1.4	0.3	1.0	0.3	10.0
Dr. King	559	1.0	2.0	0.0	1.0	2.0	1.8	0.3	1.0	0.3	9.4
Dr. Weeks	726	1.0	2.0	1.0	1.0	2.0	1.4	0.3	0.0	0.3	9.0
Franklin	632	1.0	2.0	1.0	1.0	2.0	2.0	0.3	0.5	0.3	10.1
Hughes/Syracuse Latin	293	0.6	1.0	0.0	1.0	1.0	0.6	0.3	0.0	0.3	4.8
LeMoyne Montessori	396	0.6	1.0	0.0	1.0	2.0	1.0	0.3	0.0	0.3	6.2
McKinley-Brighton	543	1.0	2.0	1.0	1.0	2.0	2.0	0.3	0.5	0.3	10.1
Meachem	367	1.0	1.0	0.0	1.0	2.0	1.0	0.3	0.5	0.3	7.1
Porter	458	1.0	1.0	1.0	1.0	2.0	1.0	0.3	0.5	0.3	8.1
Salem Hyde	521	1.0	1.0	0.0	1.0	2.0	1.0	0.3	0.0	0.3	6.6
Seymour	549	1.0	1.0	1.0	2.0	2.0	1.0	0.3	0.5	0.3	9.1
Van Duyn	391	1.0	1.0	0.0	1.0	2.0	1.0	0.3	0.5	0.3	7.1
Webster	618	1.0	1.0	0.4	1.0	2.0	1.0	0.3	0.5	0.3	7.5

School	2017-18 Enroll.	Psych.	Social Worker	School Counselor	Social Work Assistant	Promise Zone	Family Support for Student Success	Mental Health Clinician	Contact Primary Project	PAX GBG	Contact YDS	Child Welfare Liaison	Hillside	Total Staff
Edward Smith	699	1.4	2.0	1.0	0.0	1.0	2.0	1.0	0.3	0.0	0.0	0.3	1.0	10.0
Frazer	881	2.0	2.0	1.0	1.0	1.0	2.0	2.0	0.3	0.5	0.0	0.3	2.0	14.1
H.W. Smith	915	1.4	2.0	1.0	0.0	1.0	2.0	2.0	0.3	0.0	2.0	0.3	0.0	12.0
Huntington	812	1.6	2.0	1.0	0.0	1.0	2.0	1.0	0.3	0.0	1.0	0.3	0.0	10.2
Roberts	651	1.0	2.0	1.0	0.0	1.0	2.0	1.0	0.3	0.0	0.0	0.3	0.0	8.6

Middle School

School	2017-18 Enroll.	Psych.	Social Worker	School Counselor	Social Work Assistant	Promise Zone	Family Support for Student Success	Mental Health Clinician	Contact YDS	Child Welfare Liaison	Hillside	Total Staff
Clary	348	1.0	1.0	1.5	0.0	1.0	2.0	1.0	0.0	0.3	2.0	9.8
Danforth	379	1.0	1.0	1.5	1.0	1.0	2.0	1.0	3.0	0.3	2.0	13.8
ELMS	200	0.2	1.0	1.0	0.0	1.0	1.0	0.0	0.0	0.3	0.0	4.5
Grant	671	1.0	2.0	2.0	0.0	2.0	2.0	2.0	3.0	0.3	2.0	16.3
Lincoln	490	1.0	1.0	2.0	1.0	1.0	2.0	1.0	0.0	0.3	2.0	11.3
WSA	447	1.0	1.0	1.0	1.0	1.0	2.0	2.0	0.0	0.3	2.0	11.3

High School and Alternative Programs

School	2017-18 Enroll.	Psych.	Social Worker	School Counselor	Social Work Assistant	Promise Zone	FSSS	Mental Health Clinician	Contact Student Assist. Counselor	Child Welfare Liaison	Hillside	Total Staff
Corcoran	1,352	2.0	1.0	5.0	0.0	1.0	1.3	TBD	2.0	0.3	7.0	19.6
Henninger	1,833	2.0	1.0	6.0	1.0	1.0	1.3	TBD	2.0	0.3	4.0	18.6
ITC	548	0.6	1.0	2.0	0.0	0.0	0.3	0.0	1.0	0.3	3.0	8.2
Nottingham	1,348	2.0	1.0	5.0	0.0	1.0	1.3	1.0	1.0	0.3	4.0	16.6
PSLA at Fowler	922	1.0	1.0	4.0	0.0	1.0	1.3	1.0	2.0	0.3	7.0	18.6

School	Psych.	Social Worker	School Counselor	Promise Zone	FSSS	Mental Health Clinician	Child Welfare Liaison	Hillside	Total Staff
CORE	0.5	3.0	1.0	0.5	0.5	0.0	0.3	2.0	7.8
JVC	0.4	0.6	1.0	0.5	0.5	0.0	0.3	2.0	5.3
McCarthy At Beard	2.0	2.0	0.0	0.5	0.5	1.0	0.3	0.0	6.3

Thank you!

Questions?

